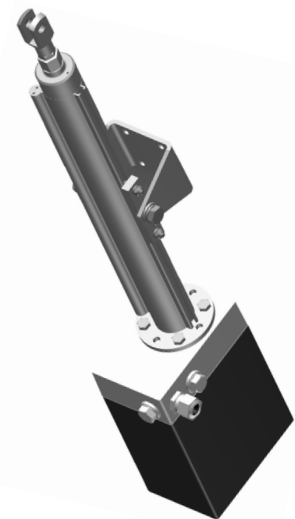


Classic Line

CL-H

LIFT DRIVE

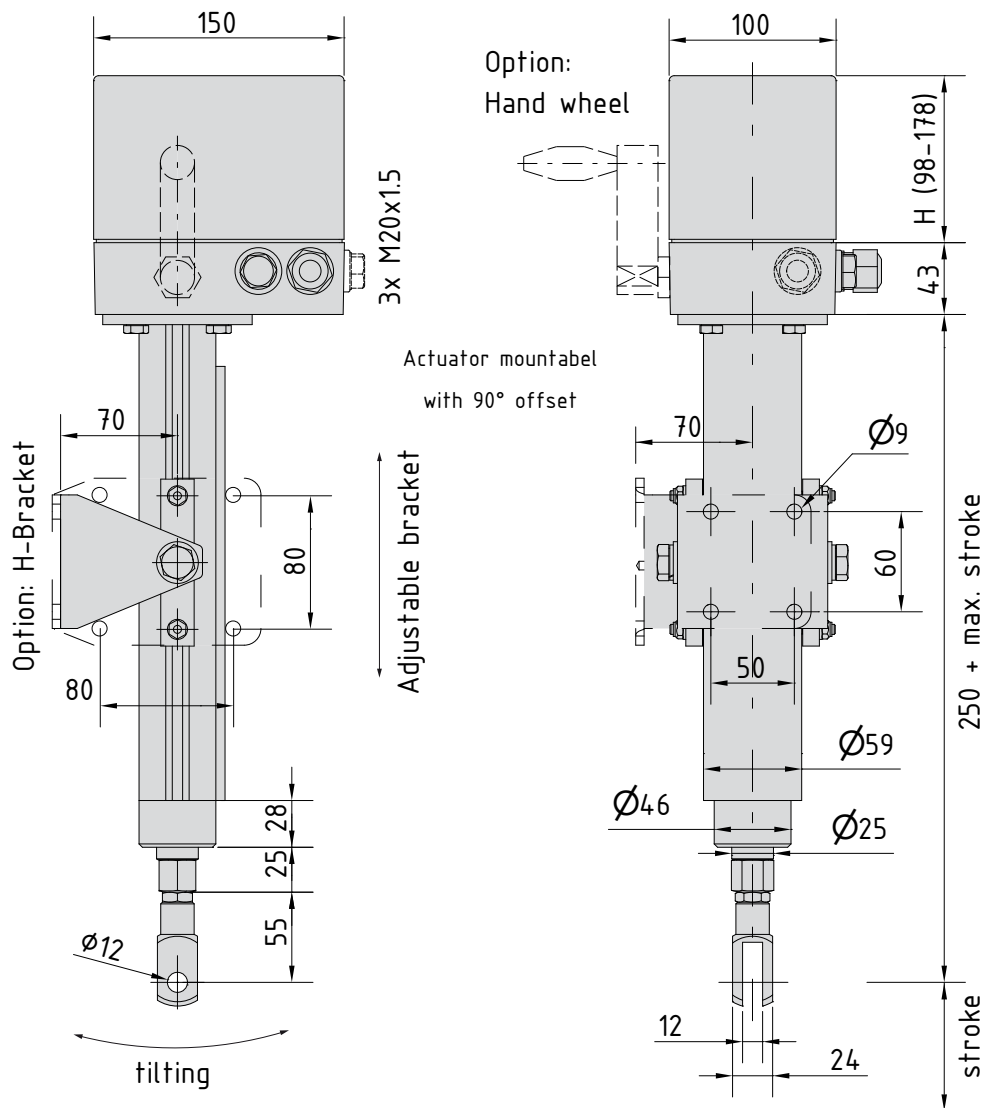


Specifications	
Actuating force	max. 2800 N (higher forces upon request)
Regulating time	1 mm...16 mm/s (load independant at AC)
Operating travel	150/300/500/750/1000 mm stroke
Voltage	230V AC, 50/60 Hz (Option 24/115V AC, 400V DS, 12/24V DC)
Ambient temp.	-15 °C...+60 °C
Protection class	IP 65
Continuous duty	100%

- Universal, sturdy industrial design
- Adjustable mounting bracket
- Vertical or horizontal movement
- Adjustable fork head
- Mountable in arbitrary positions
- Lifetime lubrication
- Short circuit-proof synchronous motor
- Finely adjustable actuating cams
- Centric force transmission
- Numerous options as additional switches, potentiometer, position indicator, position controller, load cut-off with fault indicator, gear disengagement, manual override etc.
- Control card PMR, Profi-Bus, CAN-Bus on request

Type CL-H...	Force N	Actuating time mm/s	Voltage	Weight kg
08-017	800	1.7	230V AC	3.8
15-010	1500	1.0		
06-066	600	6.6	230V AC	4.3
09-039	900	3.9		
13-027	1300	2.7		
15-018	1500	1.8		
25-013	2500	1.3		
12-066	1200	6.6		
18-039	1800	3.9	230V AC	4.8
25-027	2500	2.7		
30-018*	3000	1.8		
40-013*	4000	1.3		
Type CL-H-DC...	Force N	Actuating time mm/s	Voltage	Weight kg
06-035	600	3.5	24V DC	3.8
09-020	900	2.0		
06-100	600	10	24V DC	4.1
09-070	900	7.0		
18-035	1800	3.5		
28-020	2800	2.0		
50-010	5000	1.0		
06-160	600	16	24V DC	4.8
10-100	1000	10		
15-070	1500	7.0		
30-035*	3000	3.5		

*upon request



Lift unit

Type CL HE...	Stroke mm	Weight kg
15	150	2.4
30	300	2.9
50	500	3.4
75	750	3.9
100	1000	4.4

Type example: CL-H 08-017 + HE 15 → Lift drive 800 N/ 1.7s with 150 mm lift unit

